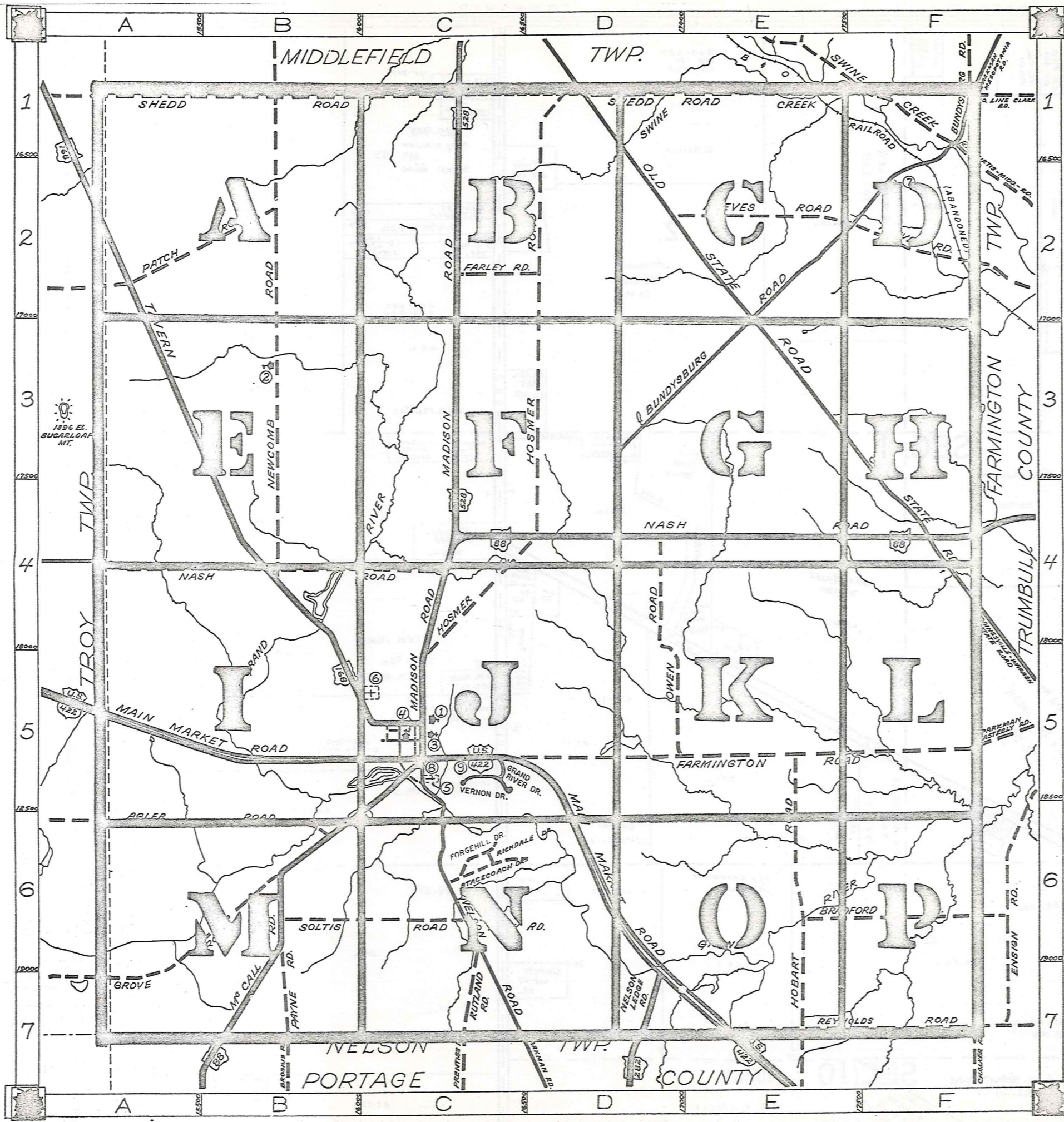


ROAD INDEX



A	AGLER RD.	A6-B6	J	R cont.
B	BRADFORD RD.	E6-F6	K	S
	BUNDYSBURG RD.	D4-F1		SOLTIS RD. B6-C6
				SHEDD RD. A1-F1
				STAGECOACH DR. C6
				SWINE CREEK RD. F1
C	CHURCH ST	C5	L	T
	CENTER ST	C5		TAVERN RD. A1-C5
D	DOTY RD.	C-6	M	U
			MADISON RD. C1-C5	
			MAIN MARKET RD. A5-E7	
			MC CALL RD. B7-C5	
			MILL RD. C5	
E			N	V
			NASH RD. C4-F4	VERNON DR. C5
			NELSON LEDGE RD. D7	
			NELSON RD. C5-C7	
			NEWCOMB RD. B1-B4	
F	FARLEY RD.	C2-D2	O	W
	FARMINGTON RD.	D5-F5		WEST PARK WEST ST. C5
	FORGEHILL DR.	C6	OLD STATE RD. D1-F4	
			OWEN RD. D4-D5	
G	GROVE RD.	A7-B6	X	
	GRAND RIVER DR.	C5		
H	HOBART RD.	E7-E5	P	Y
	HOSMER, RD.	C4-D1		PATCH RD. A2-B2
				PAYNE RD. B6-B7
			Q	Z
I			R	
			REEVES RD. E2-F2	
			REYNOLDS RD. E7-F7	
			RICHDALE DR. C6	
			RUTLAND RD. C6-C7	

- ① PARKMAN ELEMENTARY SCH.
- ② AMISH SCHOOL
- ③ PARKMAN CONGREGATIONAL CH.
- ④ ST. EDWARDS CHURCH
- ⑤ OLD CEMETERY
- ⑥ OVERLOOK CEMETERY
- ⑦ CEMETERY
- ⑧ UNITED STATES POST OFFICE
- ⑨ PARKMAN VOL. FIRE DEPT.
- ⑩

PARKMAN TOWNSHIP

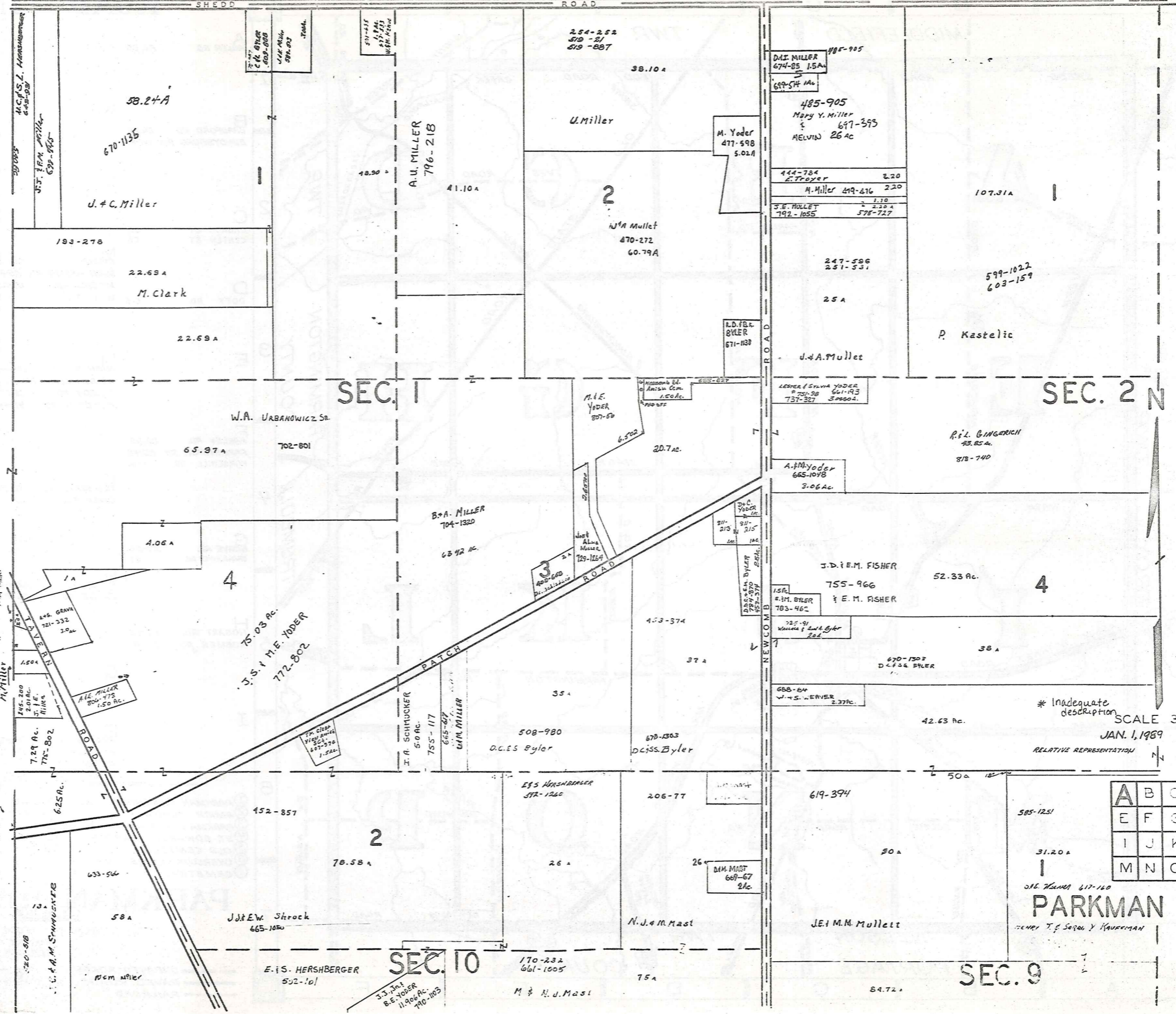
SCALE: 1"=2000'
 ROBERT L. PHILLIPS,
 GAUGA COUNTY ENGINEER

- UNPAVED ROADS
- PAVED ROADS
- - - RAILROAD
- - - TOWNSHIP LINE
- - - COUNTY LINE



TRO Y TOWNSHIP

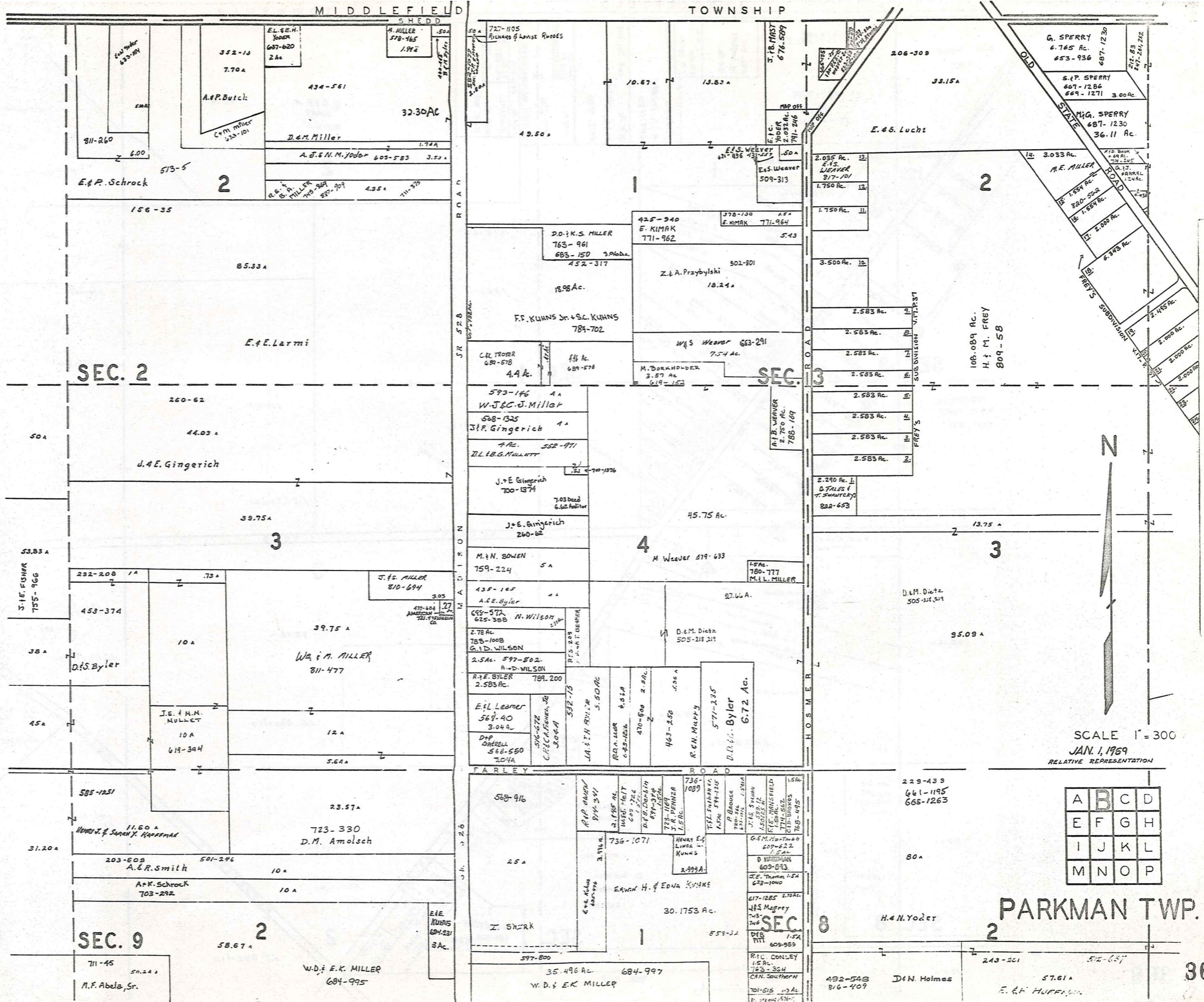
MIDDLEFIELD TOWNSHIP



* Inadequate description
SCALE 300' = 1"
JAN. 1, 1989
RELATIVE REPRESENTATION

A	B	C	D
E	F	G	H
I	J	K	L
M	N	O	P

PARKMAN TWP.
HENRY T. & SARAH Y. KAUFMAN



SEC. 2

SEC. 3

4

3

SEC. 9

SEC. 8

2

M.F. Abela, Sr.
711-45
50.24 A

W.D. & E.K. MILLER
684-995
35.496 Ac.
684-997

D.N. Holmes
492-548
816-409

E. G. HUFFMAN
57.61 A
243-201

E. & P. Schrock
811-260
6.00
513-5
7.70 A
352-13
A. & P. Butch
C.M. Miller
333-101
434-561
D. & M. Miller
A. J. & N. M. Yoder
603-583
3.53 A
1.74 A
A. MILLER
578-165
1.94 A

E. & E. Larmi
156-35
85.33 A
E. & E. Larmi
39.75 A
260-62
44.03 A
J. & E. Gingerich
J. & E. Gingerich
700-1374
7.03 Acad
6.62 Acad
J. & E. Gingerich
260-62
M. & N. BOWEN
759-224
5 A
435-105
A. E. Byler
645-572
625-388
N. Wilson
2.78 Ac
789-1008
G. D. WILSON
2.5 Ac. 597-502
A. & D. WILSON
A. & E. BYLER
789.200
2.583 Ac.
E. L. Leamer
568-40
3.04 A
D. P. SHELL
562-550
3.04 A
J. E. & M. M. MULLET
619-394
10 A
12 A
5.64 A
23.57 A
723-330
D. M. Amolsch
203-609
A. & R. Smith
10 A
A. & R. Schrock
703-292
10 A
E. E. KUNNS
604-231
3 A.

J. & E. Gingerich
700-1374
7.03 Acad
6.62 Acad
J. & E. Gingerich
260-62
M. & N. BOWEN
759-224
5 A
435-105
A. E. Byler
645-572
625-388
N. Wilson
2.78 Ac
789-1008
G. D. WILSON
2.5 Ac. 597-502
A. & D. WILSON
A. & E. BYLER
789.200
2.583 Ac.
E. L. Leamer
568-40
3.04 A
D. P. SHELL
562-550
3.04 A
J. E. & M. M. MULLET
619-394
10 A
12 A
5.64 A
23.57 A
723-330
D. M. Amolsch
203-609
A. & R. Smith
10 A
A. & R. Schrock
703-292
10 A
E. E. KUNNS
604-231
3 A.

J. & E. Gingerich
700-1374
7.03 Acad
6.62 Acad
J. & E. Gingerich
260-62
M. & N. BOWEN
759-224
5 A
435-105
A. E. Byler
645-572
625-388
N. Wilson
2.78 Ac
789-1008
G. D. WILSON
2.5 Ac. 597-502
A. & D. WILSON
A. & E. BYLER
789.200
2.583 Ac.
E. L. Leamer
568-40
3.04 A
D. P. SHELL
562-550
3.04 A
J. E. & M. M. MULLET
619-394
10 A
12 A
5.64 A
23.57 A
723-330
D. M. Amolsch
203-609
A. & R. Smith
10 A
A. & R. Schrock
703-292
10 A
E. E. KUNNS
604-231
3 A.

J. & E. Gingerich
700-1374
7.03 Acad
6.62 Acad
J. & E. Gingerich
260-62
M. & N. BOWEN
759-224
5 A
435-105
A. E. Byler
645-572
625-388
N. Wilson
2.78 Ac
789-1008
G. D. WILSON
2.5 Ac. 597-502
A. & D. WILSON
A. & E. BYLER
789.200
2.583 Ac.
E. L. Leamer
568-40
3.04 A
D. P. SHELL
562-550
3.04 A
J. E. & M. M. MULLET
619-394
10 A
12 A
5.64 A
23.57 A
723-330
D. M. Amolsch
203-609
A. & R. Smith
10 A
A. & R. Schrock
703-292
10 A
E. E. KUNNS
604-231
3 A.

J. & E. Gingerich
700-1374
7.03 Acad
6.62 Acad
J. & E. Gingerich
260-62
M. & N. BOWEN
759-224
5 A
435-105
A. E. Byler
645-572
625-388
N. Wilson
2.78 Ac
789-1008
G. D. WILSON
2.5 Ac. 597-502
A. & D. WILSON
A. & E. BYLER
789.200
2.583 Ac.
E. L. Leamer
568-40
3.04 A
D. P. SHELL
562-550
3.04 A
J. E. & M. M. MULLET
619-394
10 A
12 A
5.64 A
23.57 A
723-330
D. M. Amolsch
203-609
A. & R. Smith
10 A
A. & R. Schrock
703-292
10 A
E. E. KUNNS
604-231
3 A.

J. & E. Gingerich
700-1374
7.03 Acad
6.62 Acad
J. & E. Gingerich
260-62
M. & N. BOWEN
759-224
5 A
435-105
A. E. Byler
645-572
625-388
N. Wilson
2.78 Ac
789-1008
G. D. WILSON
2.5 Ac. 597-502
A. & D. WILSON
A. & E. BYLER
789.200
2.583 Ac.
E. L. Leamer
568-40
3.04 A
D. P. SHELL
562-550
3.04 A
J. E. & M. M. MULLET
619-394
10 A
12 A
5.64 A
23.57 A
723-330
D. M. Amolsch
203-609
A. & R. Smith
10 A
A. & R. Schrock
703-292
10 A
E. E. KUNNS
604-231
3 A.

727-1105
Richard & Louise Rhodes
10.67 A
13.83 A
49.50 A
J. B. Mast
676-507
E. J. C. Yoder
2.032 Ac.
791-216
E. J. S. Weaver
509-313
E. S. Weaver
509-313
E. S. Weaver
509-313

727-1105
Richard & Louise Rhodes
10.67 A
13.83 A
49.50 A
J. B. Mast
676-507
E. J. C. Yoder
2.032 Ac.
791-216
E. J. S. Weaver
509-313
E. S. Weaver
509-313
E. S. Weaver
509-313

727-1105
Richard & Louise Rhodes
10.67 A
13.83 A
49.50 A
J. B. Mast
676-507
E. J. C. Yoder
2.032 Ac.
791-216
E. J. S. Weaver
509-313
E. S. Weaver
509-313
E. S. Weaver
509-313

727-1105
Richard & Louise Rhodes
10.67 A
13.83 A
49.50 A
J. B. Mast
676-507
E. J. C. Yoder
2.032 Ac.
791-216
E. J. S. Weaver
509-313
E. S. Weaver
509-313
E. S. Weaver
509-313

727-1105
Richard & Louise Rhodes
10.67 A
13.83 A
49.50 A
J. B. Mast
676-507
E. J. C. Yoder
2.032 Ac.
791-216
E. J. S. Weaver
509-313
E. S. Weaver
509-313
E. S. Weaver
509-313

727-1105
Richard & Louise Rhodes
10.67 A
13.83 A
49.50 A
J. B. Mast
676-507
E. J. C. Yoder
2.032 Ac.
791-216
E. J. S. Weaver
509-313
E. S. Weaver
509-313
E. S. Weaver
509-313

727-1105
Richard & Louise Rhodes
10.67 A
13.83 A
49.50 A
J. B. Mast
676-507
E. J. C. Yoder
2.032 Ac.
791-216
E. J. S. Weaver
509-313
E. S. Weaver
509-313
E. S. Weaver
509-313

206-308
38.15 A
E. & S. Lucht
2.035 Ac.
E. S. LEAVER
817-101
1.750 Ac.
1.750 Ac.
1.750 Ac.
3.500 Ac.
2.583 Ac.
2.583 Ac.
2.583 Ac.
2.583 Ac.
2.583 Ac.
2.583 Ac.
2.583 Ac.
2.290 Ac.
D. FILES & T. SWARTZKY
822-653

206-308
38.15 A
E. & S. Lucht
2.035 Ac.
E. S. LEAVER
817-101
1.750 Ac.
1.750 Ac.
1.750 Ac.
3.500 Ac.
2.583 Ac.
2.583 Ac.
2.583 Ac.
2.583 Ac.
2.583 Ac.
2.583 Ac.
2.583 Ac.
2.290 Ac.
D. FILES & T. SWARTZKY
822-653

206-308
38.15 A
E. & S. Lucht
2.035 Ac.
E. S. LEAVER
817-101
1.750 Ac.
1.750 Ac.
1.750 Ac.
3.500 Ac.
2.583 Ac.
2.583 Ac.
2.583 Ac.
2.583 Ac.
2.583 Ac.
2.583 Ac.
2.290 Ac.
D. FILES & T. SWARTZKY
822-653

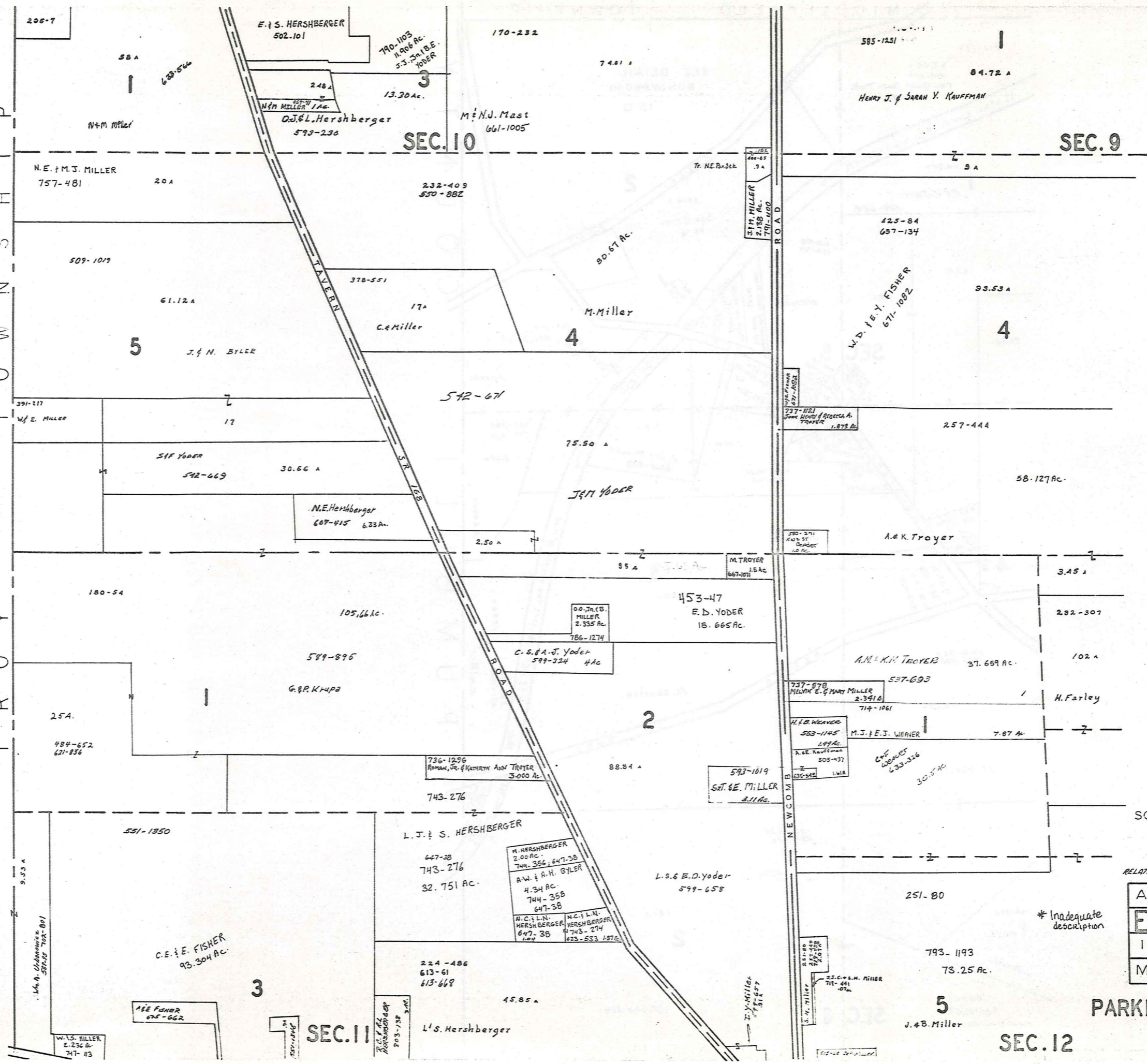
206-308
38.15 A
E. & S. Lucht
2.035 Ac.
E. S. LEAVER
817-101
1.750 Ac.
1.750 Ac.
1.750 Ac.
3.500 Ac.
2.583 Ac.
2.583 Ac.
2.583 Ac.
2.583 Ac.
2.583 Ac.
2.290 Ac.
D. FILES & T. SWARTZKY
822-653

206-308
38.15 A
E. & S. Lucht
2.035 Ac.
E. S. LEAVER
817-101
1.750 Ac.
1.750 Ac.
1.750 Ac.
3.500 Ac.
2.583 Ac.
2.583 Ac.
2.583 Ac.
2.583 Ac.
2.583 Ac.
2.290 Ac.
D. FILES & T. SWARTZKY
822-653

206-308
38.15 A
E. & S. Lucht
2.035 Ac.
E. S. LEAVER
817-101
1.750 Ac.
1.750 Ac.
1.750 Ac.
3.500 Ac.
2.583 Ac.
2.583 Ac.
2.583 Ac.
2.583 Ac.
2.583 Ac.
2.290 Ac.
D. FILES & T. SWARTZKY
822-653

206-308
38.15 A
E. & S. Lucht
2.035 Ac.
E. S. LEAVER
817-101
1.750 Ac.
1.750 Ac.
1.750 Ac.
3.500 Ac.
2.583 Ac.
2.583 Ac.
2.583 Ac.
2.583 Ac.
2.583 Ac.
2.290 Ac.
D. FILES & T. SWARTZKY
822-653

T R O Y T O W N S H I P



SCALE 1" = 300'

JAN. 1, 1989
RELATIVE REPRESENTATION

A	B	C	D
E	F	G	H
I	J	K	L
M	N	O	P

* Inadequate description

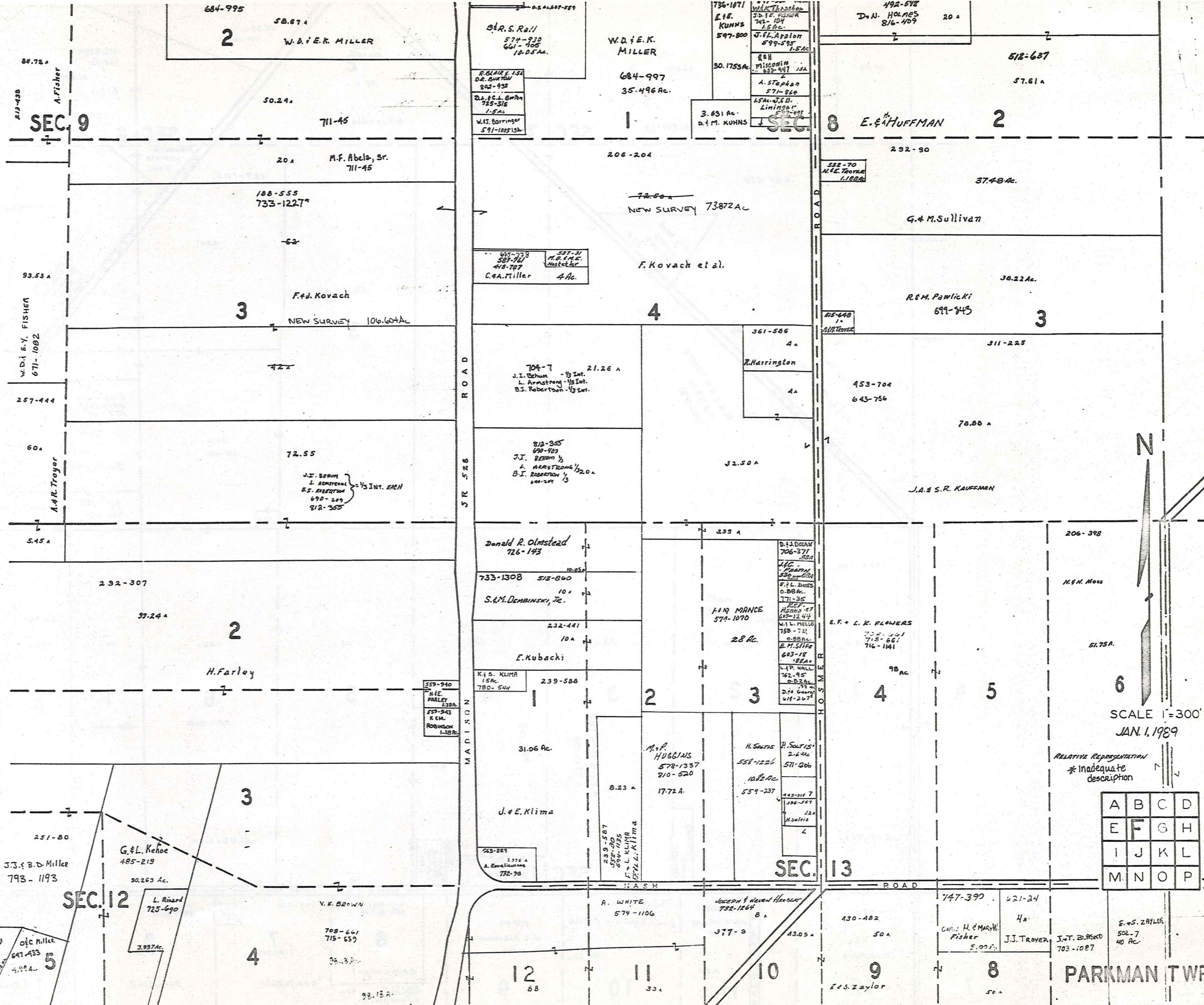
PARKMAN TWP

SEC. 12

SEC. 11

SEC. 10

SEC. 9



SEC. 9

SEC. 8

SEC. 13

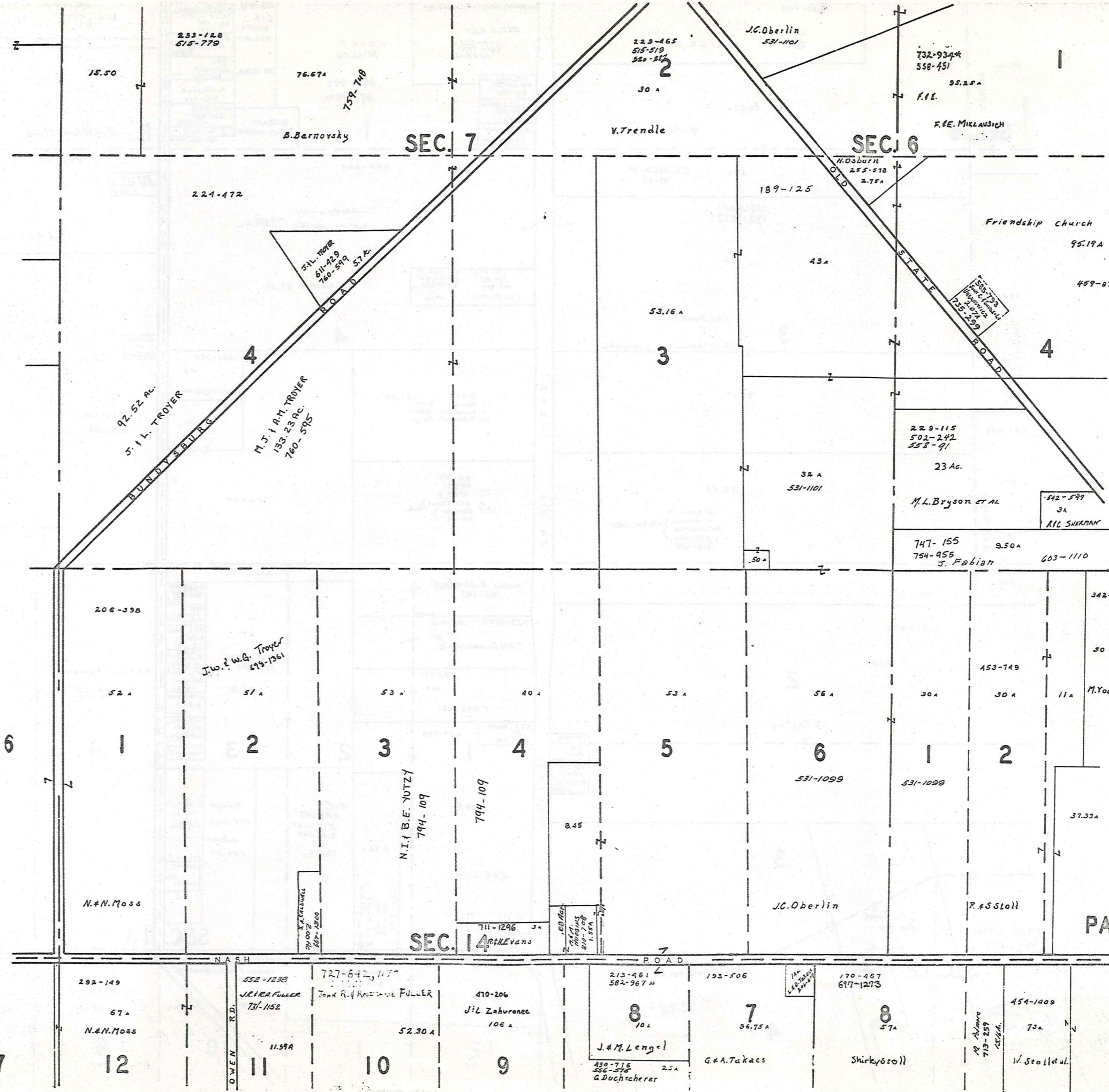
SEC. 12

SCALE 1"=300'
JAN. 1, 1989

RELATIVE REPRESENTATION
* Inadequate description

A	B	C	D
E	F	G	H
I	J	K	L
M	N	O	P

PARKMAN TWP. 371



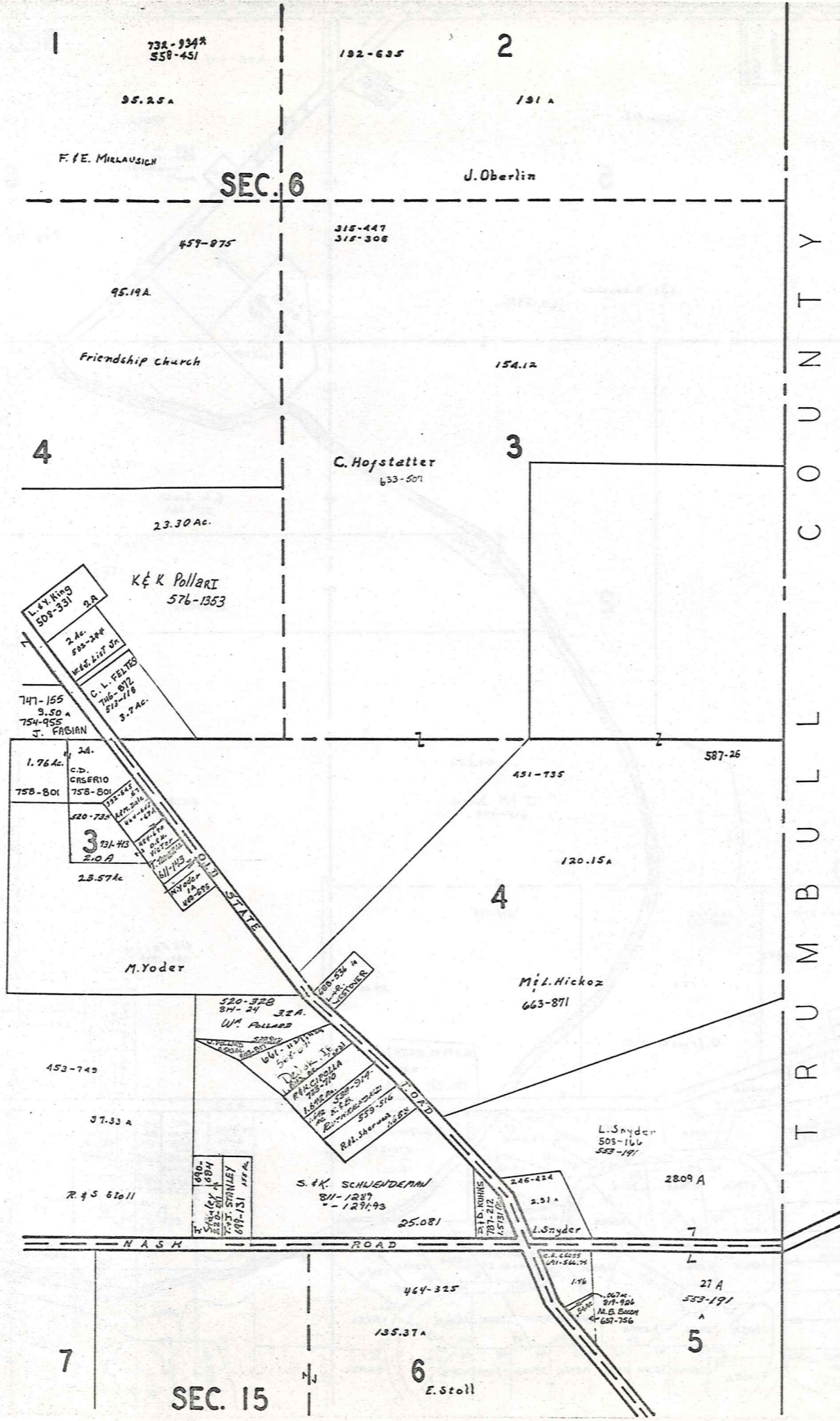
SCALE 1" = 300'

JAN. 1, 1989
RELATIVE REPRESENTATION

A	B	C	D
E	F	G	H
I	J	K	L
M	N	O	P

PARKMAN TWP.

* Inadequate description



T
3
7
N
R
6
W



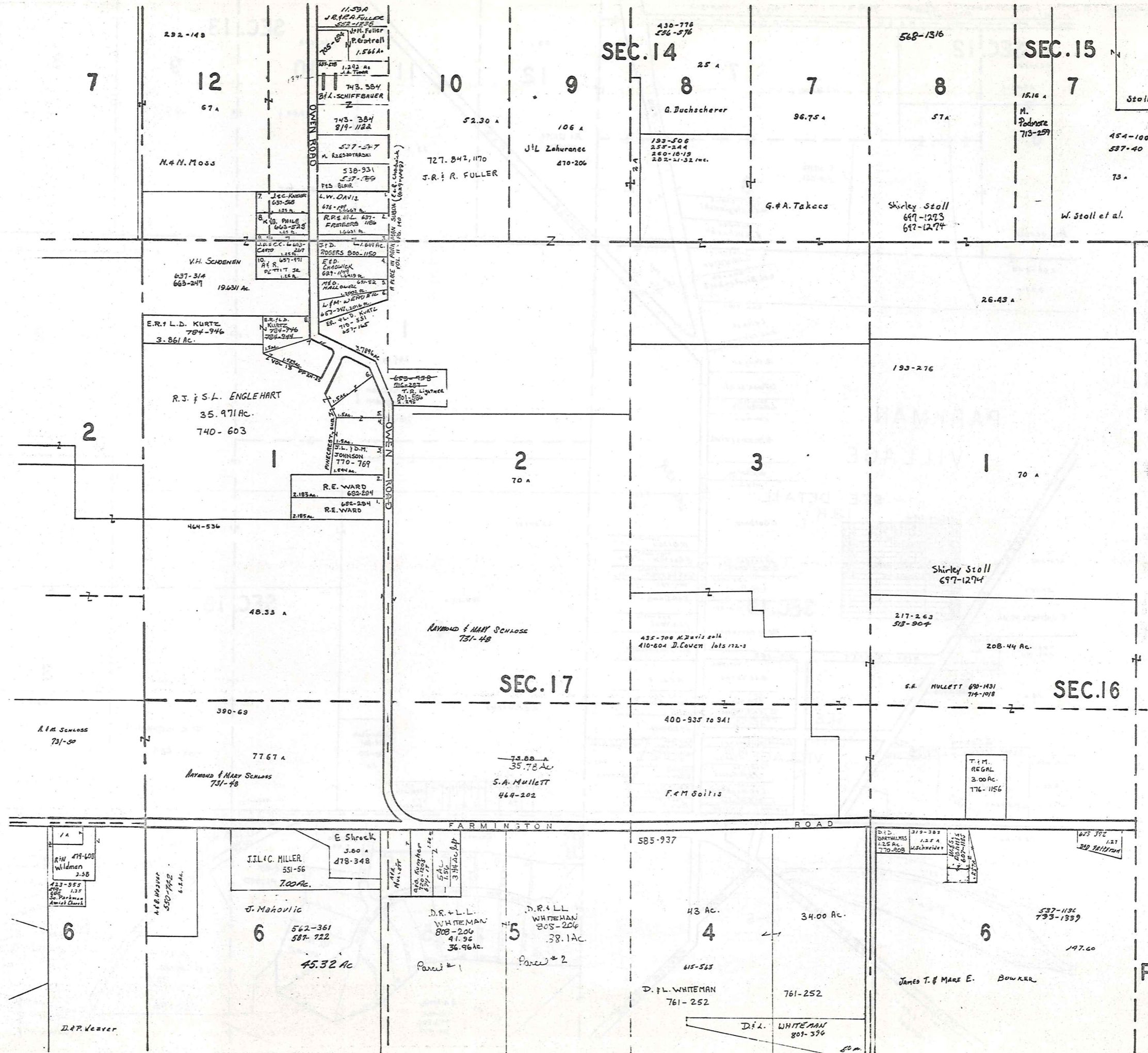
SCALE 1" = 300'

* Inadequate description

JAN. 1, 1989
RELATIVE REPRESENTATION

A	B	C	D
E	F	G	H
I	J	K	L
M	N	O	P

PARKMAN TWP 373



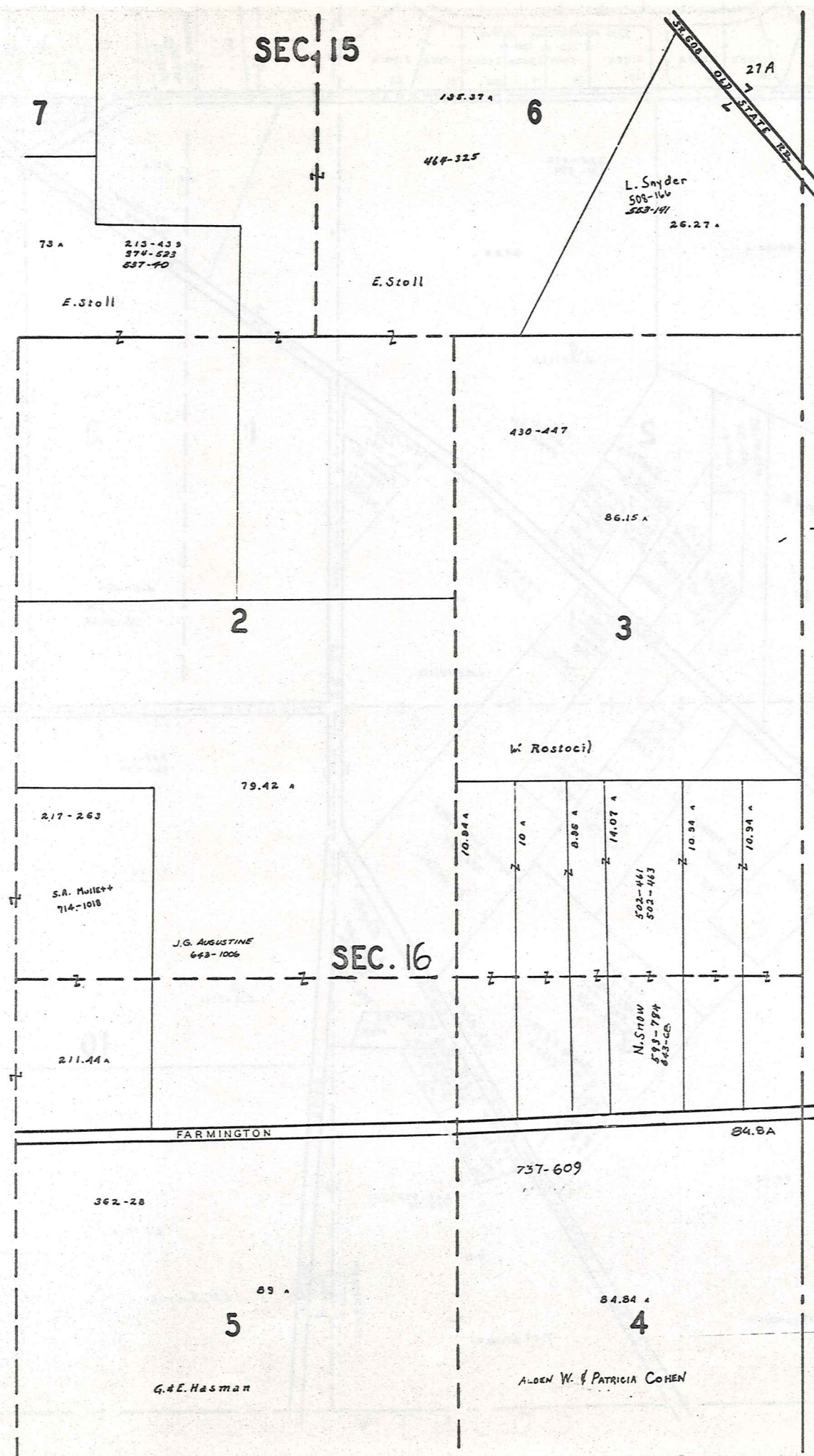
N
 SCALE 1" = 300'

JAN. 1, 1989
 RELATIVE REPRESENTATION

A	B	C	D
E	F	G	H
I	J	K	L
M	N	O	P

PARKMAN TWP

* Inadequate description

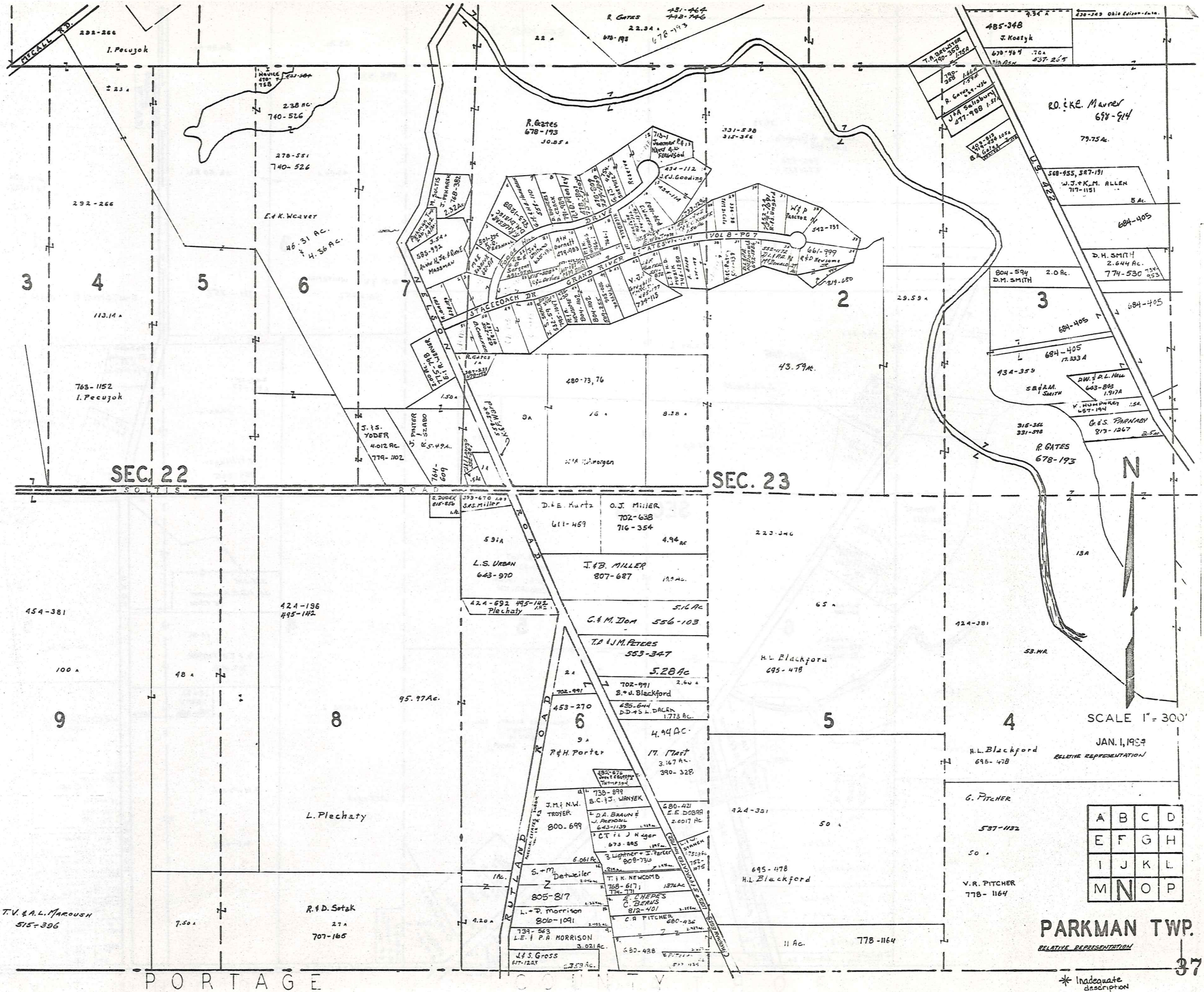


T R U M B U L L C O U N T Y

75	76	77	78	79	80	81	82	83	84	85	86	87	88	89	90	91	92	93	94
95	96	97	98	99	100	101	102	103	104	105	106	107	108	109	110	111	112	113	114
115	116	117	118	119	120	121	122	123	124	125	126	127	128	129	130	131	132	133	134
135	136	137	138	139	140	141	142	143	144	145	146	147	148	149	150	151	152	153	154
155	156	157	158	159	160	161	162	163	164	165	166	167	168	169	170	171	172	173	174
175	176	177	178	179	180	181	182	183	184	185	186	187	188	189	190	191	192	193	194
195	196	197	198	199	200	201	202	203	204	205	206	207	208	209	210	211	212	213	214
215	216	217	218	219	220	221	222	223	224	225	226	227	228	229	230	231	232	233	234
235	236	237	238	239	240	241	242	243	244	245	246	247	248	249	250	251	252	253	254
255	256	257	258	259	260	261	262	263	264	265	266	267	268	269	270	271	272	273	274
275	276	277	278	279	280	281	282	283	284	285	286	287	288	289	290	291	292	293	294
295	296	297	298	299	300	301	302	303	304	305	306	307	308	309	310	311	312	313	314
315	316	317	318	319	320	321	322	323	324	325	326	327	328	329	330	331	332	333	334
335	336	337	338	339	340	341	342	343	344	345	346	347	348	349	350	351	352	353	354
355	356	357	358	359	360	361	362	363	364	365	366	367	368	369	370	371	372	373	374
375	376	377	378	379	380	381	382	383	384	385	386	387	388	389	390	391	392	393	394
395	396	397	398	399	400	401	402	403	404	405	406	407	408	409	410	411	412	413	414
415	416	417	418	419	420	421	422	423	424	425	426	427	428	429	430	431	432	433	434
435	436	437	438	439	440	441	442	443	444	445	446	447	448	449	450	451	452	453	454
455	456	457	458	459	460	461	462	463	464	465	466	467	468	469	470	471	472	473	474
475	476	477	478	479	480	481	482	483	484	485	486	487	488	489	490	491	492	493	494
495	496	497	498	499	500	501	502	503	504	505	506	507	508	509	510	511	512	513	514
515	516	517	518	519	520	521	522	523	524	525	526	527	528	529	530	531	532	533	534
535	536	537	538	539	540	541	542	543	544	545	546	547	548	549	550	551	552	553	554
555	556	557	558	559	560	561	562	563	564	565	566	567	568	569	570	571	572	573	574
575	576	577	578	579	580	581	582	583	584	585	586	587	588	589	590	591	592	593	594
595	596	597	598	599	600	601	602	603	604	605	606	607	608	609	610	611	612	613	614
615	616	617	618	619	620	621	622	623	624	625	626	627	628	629	630	631	632	633	634
635	636	637	638	639	640	641	642	643	644	645	646	647	648	649	650	651	652	653	654
655	656	657	658	659	660	661	662	663	664	665	666	667	668	669	670	671	672	673	674
675	676	677	678	679	680	681	682	683	684	685	686	687	688	689	690	691	692	693	694
695	696	697	698	699	700	701	702	703	704	705	706	707	708	709	710	711	712	713	714
715	716	717	718	719	720	721	722	723	724	725	726	727	728	729	730	731	732	733	734
735	736	737	738	739	740	741	742	743	744	745	746	747	748	749	750	751	752	753	754
755	756	757	758	759	760	761	762	763	764	765	766	767	768	769	770	771	772	773	774
775	776	777	778	779	780	781	782	783	784	785	786	787	788	789	790	791	792	793	794
795	796	797	798	799	800	801	802	803	804	805	806	807	808	809	810	811	812	813	814
815	816	817	818	819	820	821	822	823	824	825	826	827	828	829	830	831	832	833	834
835	836	837	838	839	840	841	842	843	844	845	846	847	848	849	850	851	852	853	854
855	856	857	858	859	860	861	862	863	864	865	866	867	868	869	870	871	872	873	874
875	876	877	878	879	880	881	882	883	884	885	886	887	888	889	890	891	892	893	894
895	896	897	898	899	900	901	902	903	904	905	906	907	908	909	910	911	912	913	914
915	916	917	918	919	920	921	922	923	924	925	926	927	928	929	930	931	932	933	934
935	936	937	938	939	940	941	942	943	944	945	946	947	948	949	950	951	952	953	954
955	956	957	958	959	960	961	962	963	964	965	966	967	968	969	970	971	972	973	974
975	976	977	978	979	980	981	982	983	984	985	986	987	988	989	990	991	992	993	994
995	996	997	998	999	1000	1001	1002	1003	1004	1005	1006	1007	1008	1009	1010	1011	1012	1013	1014

See Vol. 691-Pg. 1431
J.E. Soltis & S.A.H. MULLETT

Sublot	Name	Number	Maple Hollow	Sub-Division #3
170	Check: et al	692-8	479-562	687-1134
171				
172				
173				
174				
175				
176				
177				
178				
179				
180				
181	692-8			513-993
182				
183				
184				
185				
186				
187				
188				
189				
190				
191				
192				
193				
194				
195				
196				
197				
198				
199				
200				
201				
202				
203				
204				
205				
206				
207				
208				
209				
210				
211				
212				
213				
214				
215				
216				
217				
218				
219				
220				
221				
222				
223				
224				
225				
226				
227				
228				
229				
230				
231				
232				
233				
234				
235				
236				
237				
238				
239				
240				
241				
242				
243				
244				
245				
246				
247				
248				
249				
250				
251				
252				
253				
254				
255				
256				
257				
258				
259				
260				
261				
262				
263				
264				
265				
266				
267				
268				
269				
270				
271				
272				
273				
274				
275				
276				
277				
278				
279				
280				
281				
282				
283				
284				
285				
286				
287				
288				
289				
290				
291				
292				
293				
294				
295				
296				
297				
298				
299				
300				
301				
302				
303				
304				
305				
306				
307				
308				
309				
310				
311				
312				
313				
314</				



SEC. 22

SEC. 23

SCALE 1" = 300'

JAN. 1, 1934

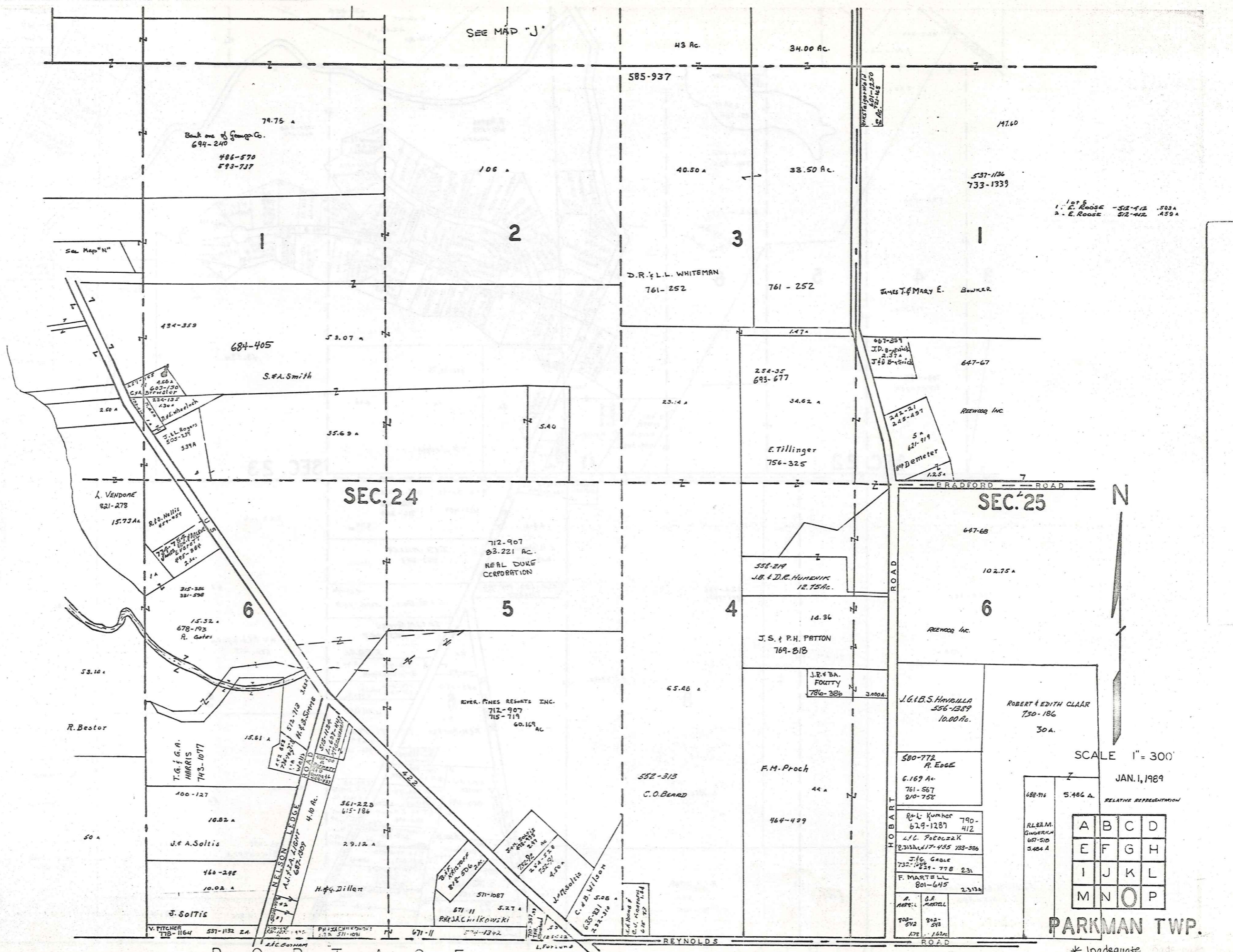
PARKMAN TWP.

RELATIVE REPRESENTATION

A	B	C	D
E	F	G	H
I	J	K	L
M	N	O	P

* Inadequate description

SEE MAP "J"



1st E. ROOSE -512-412 .503A
 2. E. ROOSE 812-412 .459A

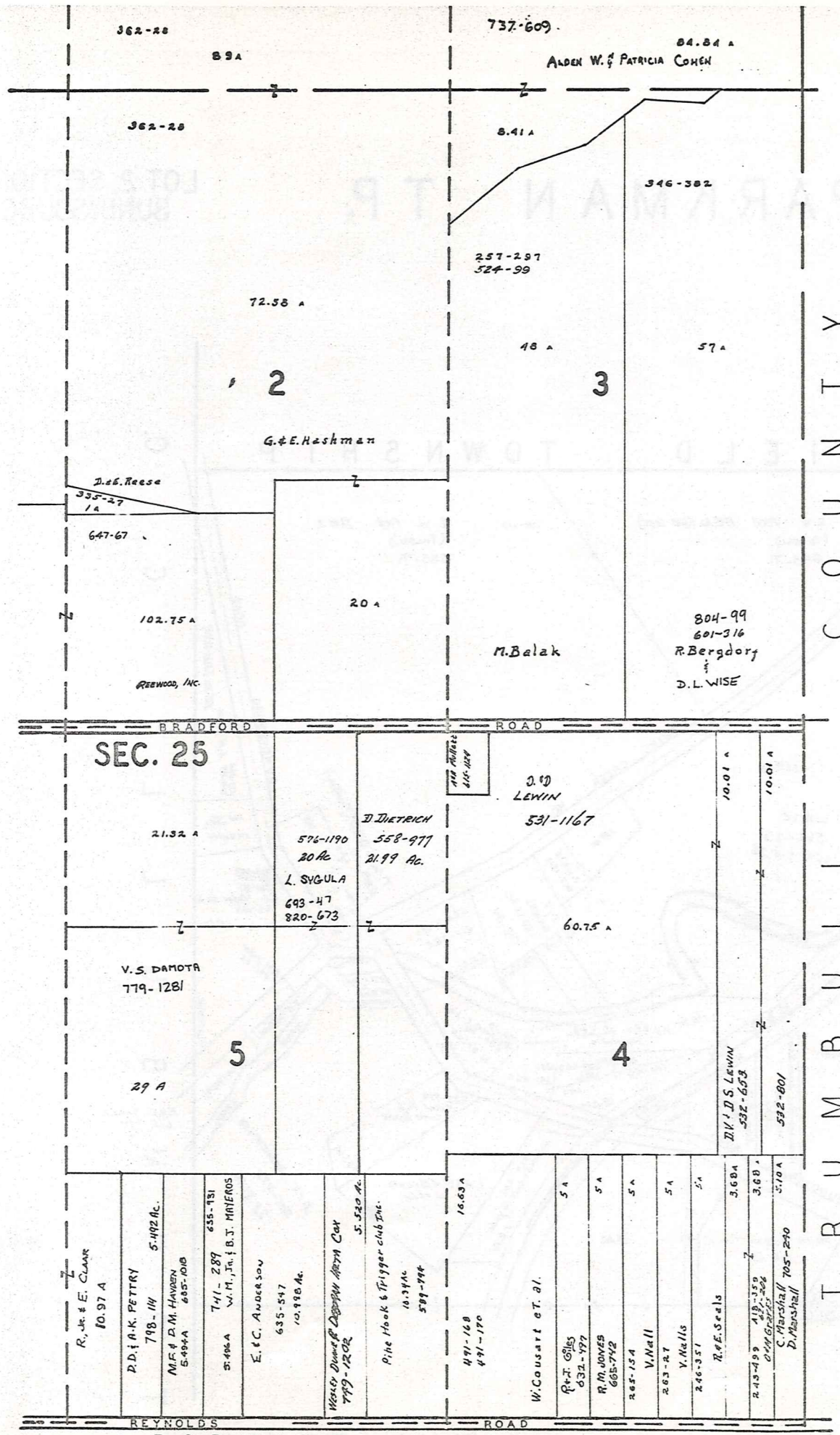
N

SCALE 1" = 300'
 JAN. 1, 1989
 RELATIVE REPRESENTATION

A	B	C	D
E	F	G	H
I	J	K	L
M	N	O	P

PARKMAN TWP.

* Inadequate description



T R U M B U L L C O U N T Y

SEC. 25

PORTAGE COUNTY

* Inadequate description

RELATIVE REPRESENTATION

A	B	C	D
E	F	G	H
I	J	K	L
M	N	O	P



SCALE 1" = 300'

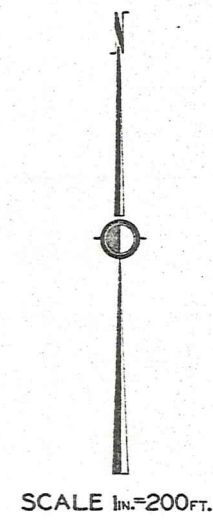
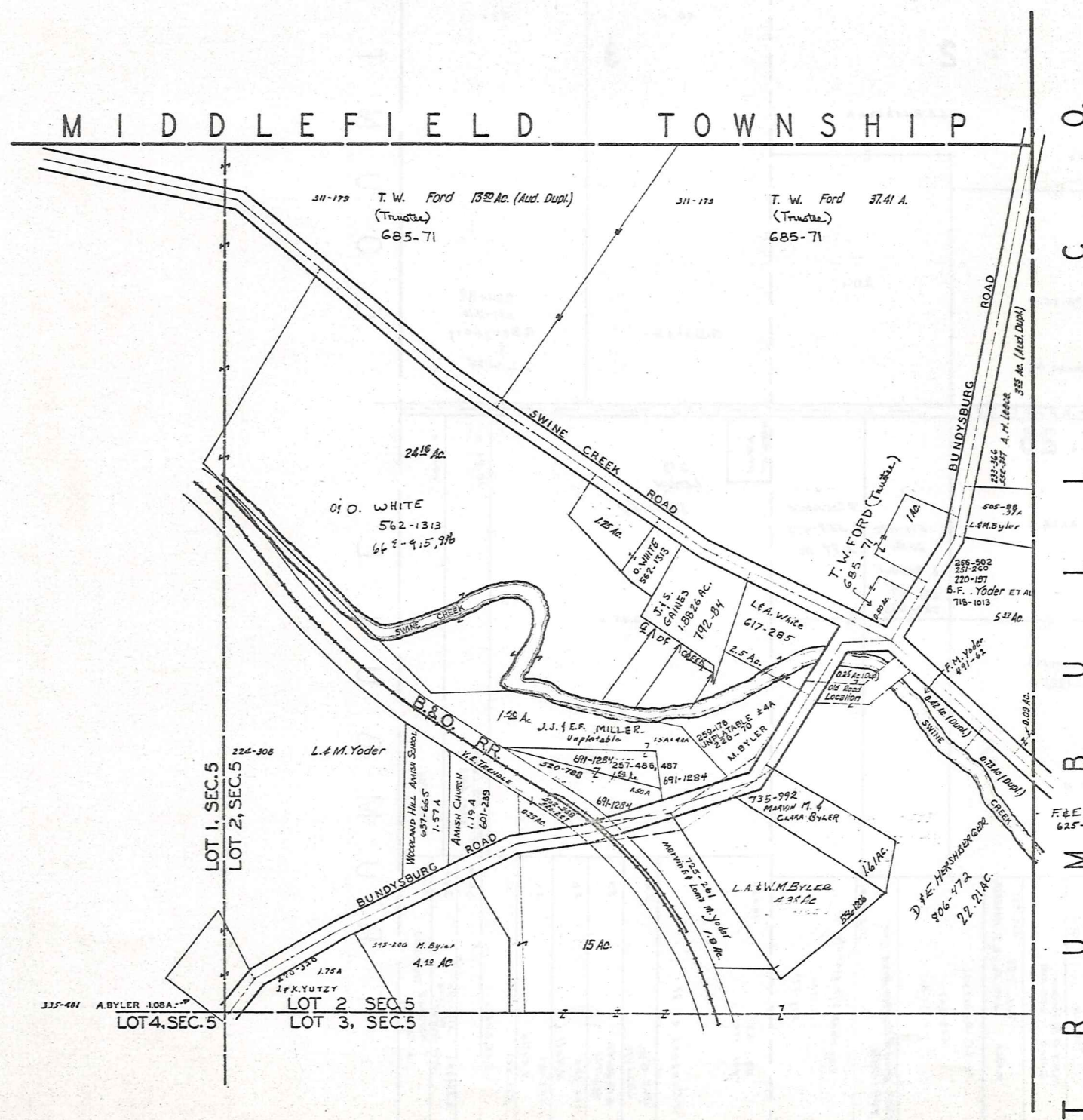
JAN. 1, 1984

PARKMAN TWP 381

LOT 2, SECTION 5
BUNDYSBURG

PARKMAN T.P.

LOT 2, SECTION 5
BUNDYSBURG

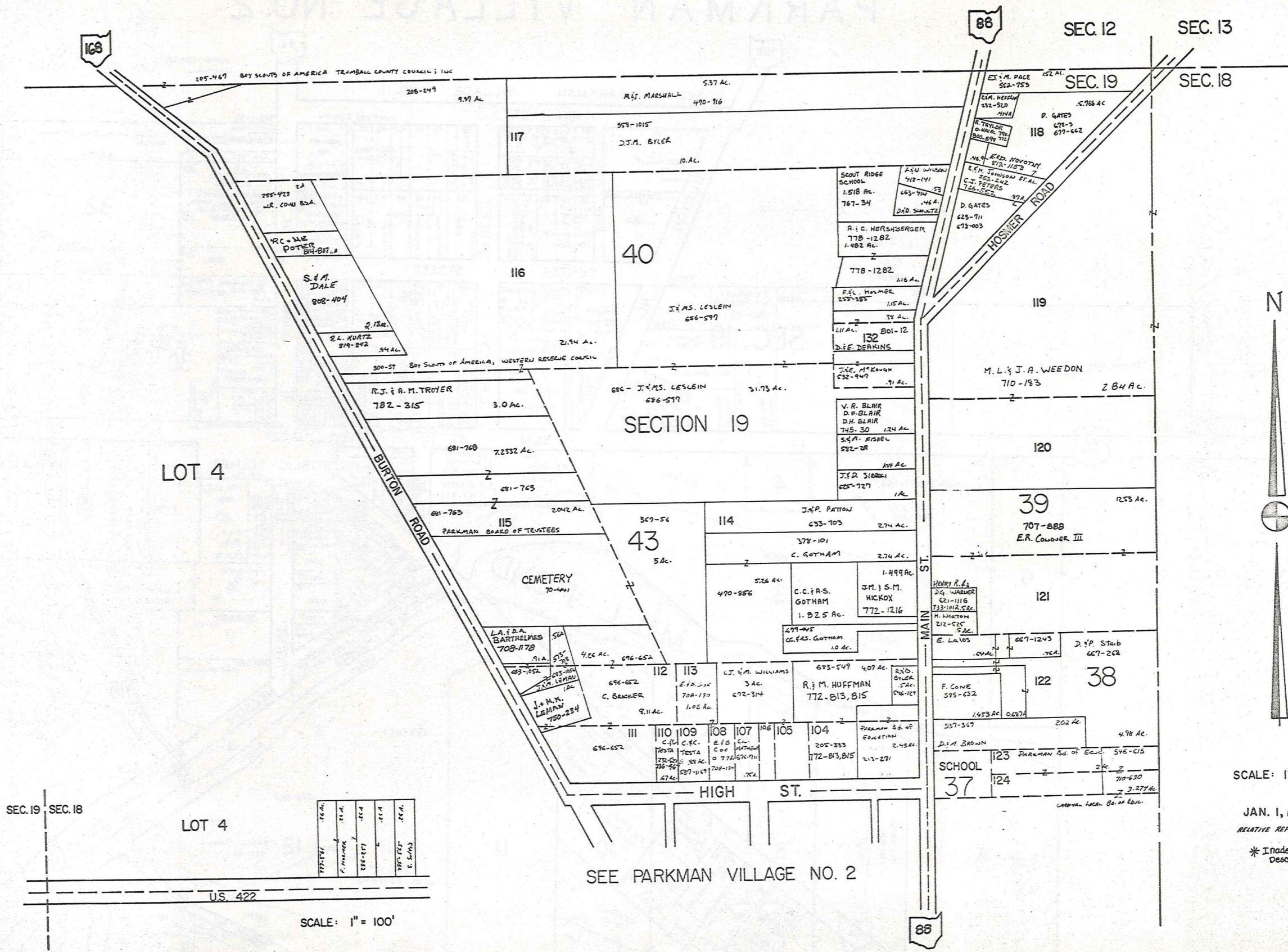


JAN. 1, 1981

RELATIVE REPRESENTATION

* Inadequate Description

PARKMAN VILLAGE NO. 1



LOT 4

LOT 4

18.00	18.00	18.00	18.00	18.00
18.00	18.00	18.00	18.00	18.00
18.00	18.00	18.00	18.00	18.00
18.00	18.00	18.00	18.00	18.00
18.00	18.00	18.00	18.00	18.00

SCALE: 1" = 100'

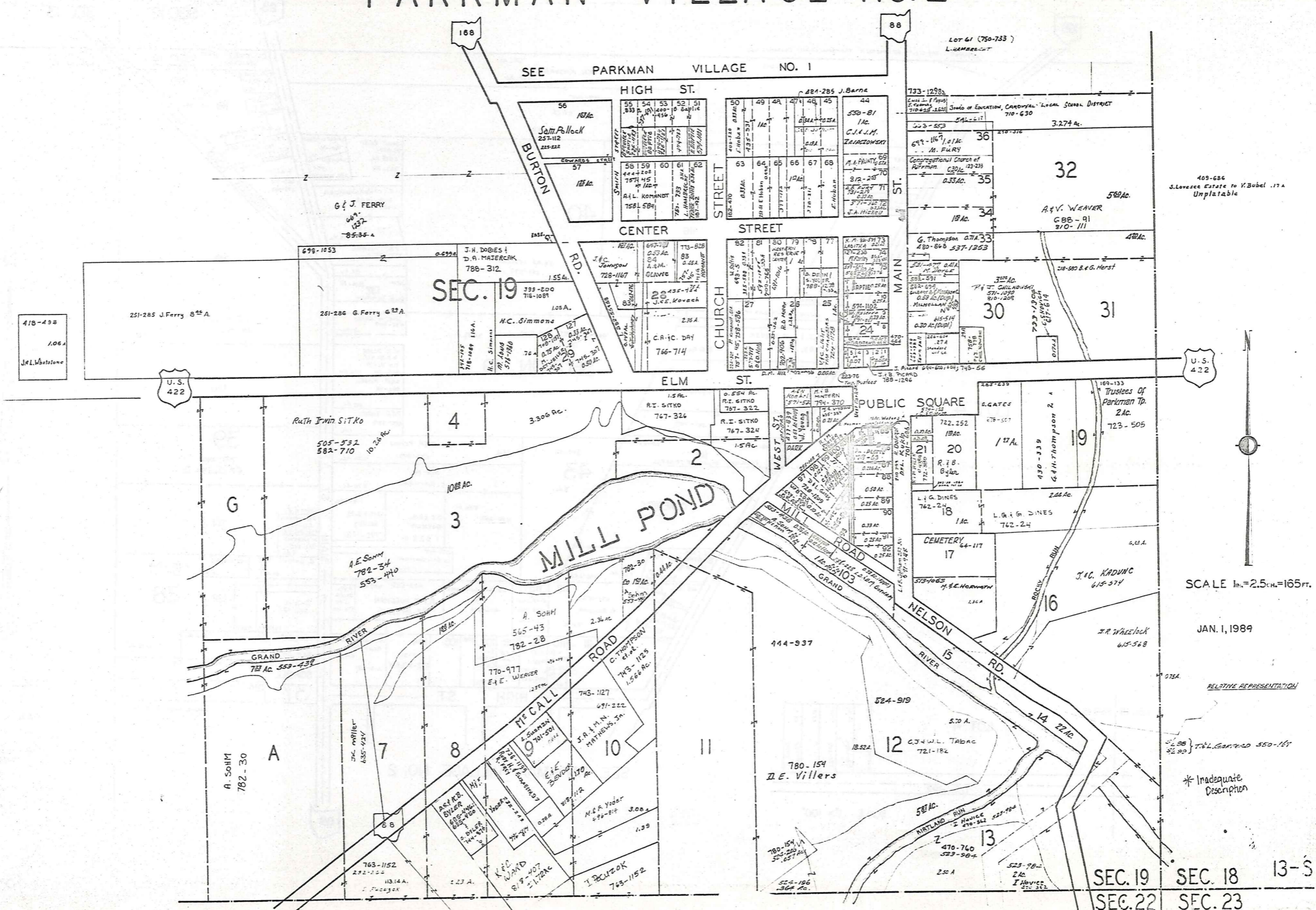


SCALE: 1" = 200'

JAN. 1, 1989
RELATIVE REPRESENTATION
* Inadequate description

SEE PARKMAN VILLAGE NO. 2

PARKMAN VILLAGE NO. 2



418-438
1.06 A
J.L. Whitstone

U.S. 422

U.S. 422

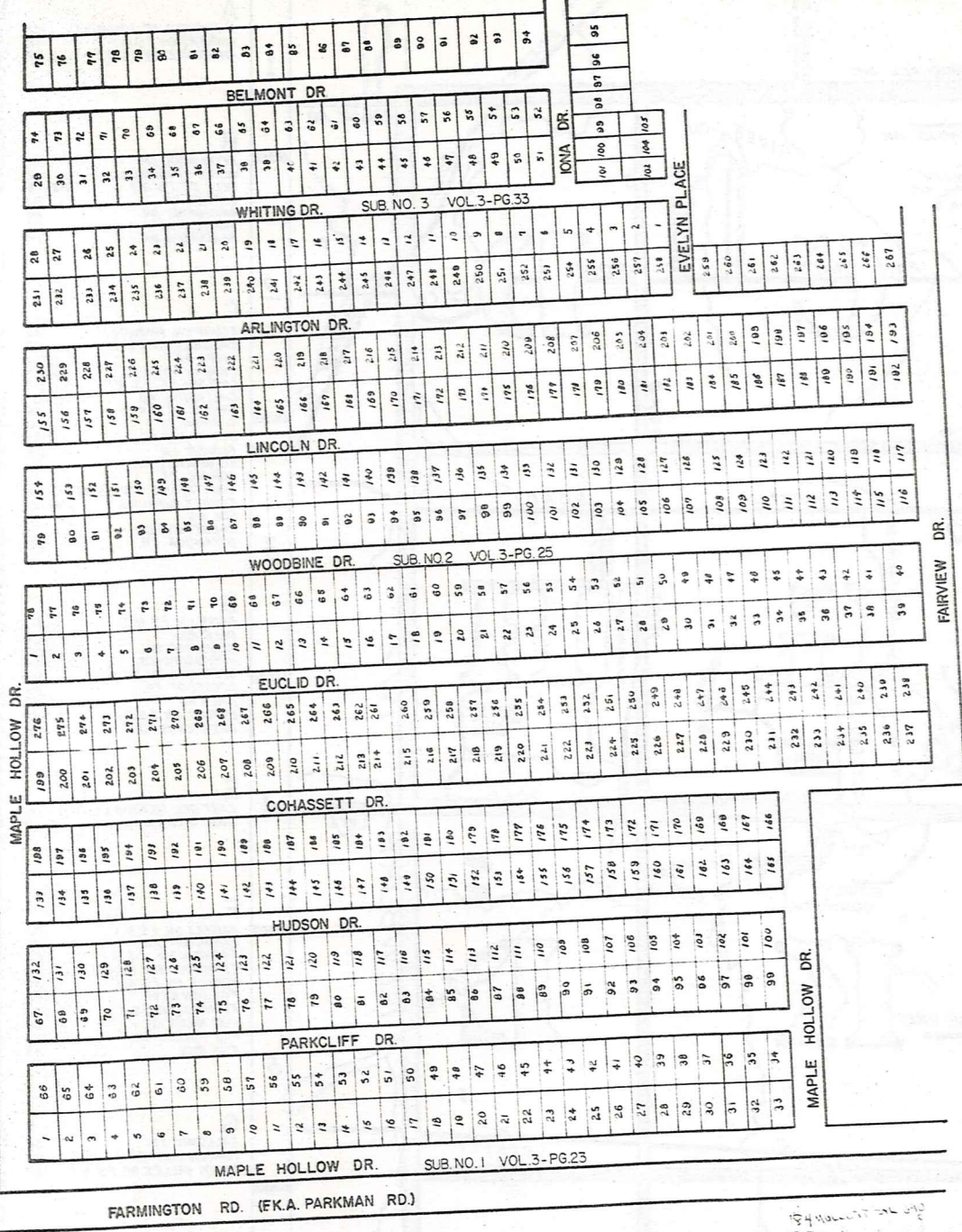
SCALE 1 in. = 2.5 ch. = 165 ft.

JAN. 1, 1989

RELATIVE REPRESENTATION

* Inadequate Description

SEC. 19 SEC. 18 13-S
SEC. 22 SEC. 23



THE MAPLE HOLLOW COUNTRY CLUB SUBDIVISION
 PLATS 1, 2, & 3. (VOL. 3-PGS. 23, 25, & 33.)

SUBDIVISION NO. 1	109	110	111	112	113	114	115	116	117	118	119	120	121	122	123	124	125	126	127	128	129	130	131	132	133	134	135	136	137	138	139	140	141	142	143	144	145	146	147	148	149	150	151	152	153	154	155	156	157	158	159	160	161	162	163	164	165	166	167	168	169	170	171	172	173	174	175	176	177	178	179	180	181	182	183	184	185	186	187	188	189	190	191	192	193	194	195	196	197	198	199	200	201	202	203	204	205	206	207	208	209	210	211	212	213	214	215	216	217	218	219	220	221	222	223	224	225	226	227	228	229	230	231	232	233	234	235	236	237	238	239	240	241	242	243	244	245	246	247	248	249	250	251	252	253	254	255	256	257	258	259	260	261	262	263	264	265	266	267	268	269	270	271	272	273	274	275	276	277	278	279	280	281	282	283	284	285	286	287	288	289	290	291	292	293	294	295	296	297	298	299	300	301	302	303	304	305	306	307	308	309	310	311	312	313	314	315	316	317	318	319	320	321	322	323	324	325	326	327	328	329	330	331	332	333	334	335	336	337	338	339	340	341	342	343	344	345	346	347	348	349	350	351	352	353	354	355	356	357	358	359	360	361	362	363	364	365	366	367	368	369	370	371	372	373	374	375	376	377	378	379	380	381	382	383	384	385	386	387	388	389	390	391	392	393	394	395	396	397	398	399	400	401	402	403	404	405	406	407	408	409	410	411	412	413	414	415	416	417	418	419	420	421	422	423	424	425	426	427	428	429	430	431	432	433	434	435	436	437	438	439	440	441	442	443	444	445	446	447	448	449	450	451	452	453	454	455	456	457	458	459	460	461	462	463	464	465	466	467	468	469	470	471	472	473	474	475	476	477	478	479	480	481	482	483	484	485	486	487	488	489	490	491	492	493	494	495	496	497	498	499	500	501	502	503	504	505	506	507	508	509	510	511	512	513	514	515	516	517	518	519	520	521	522	523	524	525	526	527	528	529	530	531	532	533	534	535	536	537	538	539	540	541	542	543	544	545	546	547	548	549	550	551	552	553	554	555	556	557	558	559	560	561	562	563	564	565	566	567	568	569	570	571	572	573	574	575	576	577	578	579	580	581	582	583	584	585	586	587	588	589	590	591	592	593	594	595	596	597	598	599	600	601	602	603	604	605	606	607	608	609	610	611	612	613	614	615	616	617	618	619	620	621	622	623	624	625	626	627	628	629	630	631	632	633	634	635	636	637	638	639	640	641	642	643	644	645	646	647	648	649	650	651	652	653	654	655	656	657	658	659	660	661	662	663	664	665	666	667	668	669	670	671	672	673	674	675	676	677	678	679	680	681	682	683	684	685	686	687	688	689	690	691	692	693	694	695	696	697	698	699	700	701	702	703	704	705	706	707	708	709	710	711	712	713	714	715	716	717	718	719	720	721	722	723	724	725	726	727	728	729	730	731	732	733	734	735	736	737	738	739	740	741	742	743	744	745	746	747	748	749	750	751	752	753	754	755	756	757	758	759	760	761	762	763	764	765	766	767	768	769	770	771	772	773	774	775	776	777	778	779	780	781	782	783	784	785	786	787	788	789	790	791	792	793	794	795	796	797	798	799	800	801	802	803	804	805	806	807	808	809	810	811	812	813	814	815	816	817	818	819	820	821	822	823	824	825	826	827	828	829	830	831	832	833	834	835	836	837	838	839	840	841	842	843	844	845	846	847	848	849	850	851	852	853	854	855	856	857	858	859	860	861	862	863	864	865	866	867	868	869	870	871	872	873	874	875	876	877	878	879	880	881	882	883	884	885	886	887	888	889	890	891	892	893	894	895	896	897	898	899	900	901	902	903	904	905	906	907	908	909	910	911	912	913	914	915	916	917	918	919	920	921	922	923	924	925	926	927	928	929	930	931	932	933	934	935	936	937	938	939	940	941	942	943	944	945	946	947	948	949	950	951	952	953	954	955	956	957	958	959	960	961	962	963	964	965	966	967	968	969	970	971	972	973	974	975	976	977	978	979	980	981	982	983	984	985	986	987	988	989	990	991	992	993	994	995	996	997	998	999	1000
1	ROHNER, H.T.K.	559-933	111	112	MULLETT, S.A.	714-1018	113	114	ROHNER, H.T.K.	559-933	115	116	MULLETT, S.A.	714-1018	117	118	ROHNER, H.T.K.	559-933	119	120	MULLETT, S.A.	714-1018	121	122	ROHNER, H.T.K.	559-933	123	124	MULLETT, S.A.	714-1018	125	126	ROHNER, H.T.K.	559-933	127	128	MULLETT, S.A.	714-1018	129	130	ROHNER, H.T.K.	559-933	131	132	MULLETT, S.A.	714-1018	133	134	ROHNER, H.T.K.	559-933	135	136	MULLETT, S.A.	714-1018	137	138	ROHNER, H.T.K.	559-933	139	140	MULLETT, S.A.	714-1018	141	142	ROHNER, H.T.K.	559-933	143	144	MULLETT, S.A.	714-1018	145	146	ROHNER, H.T.K.	559-933	147	148	MULLETT, S.A.	714-1018	149	150	ROHNER, H.T.K.	559-933	151	152	MULLETT, S.A.	714-1018	153	154	ROHNER, H.T.K.	559-933	155	156	MULLETT, S.A.	714-1018	157	158	ROHNER, H.T.K.	559-933	159	160	MULLETT, S.A.	714-1018	161	162	ROHNER, H.T.K.	559-933	163	164	MULLETT, S.A.	714-1018	165	166	ROHNER, H.T.K.	559-933	167	168	MULLETT, S.A.	714-1018	169	170	ROHNER, H.T.K.	559-933	171	172	MULLETT, S.A.	714-1018	173	174	ROHNER, H.T.K.	559-933	175	176	MULLETT, S.A.	714-1018	177	178	ROHNER, H.T.K.	559-933	179	180	MULLETT, S.A.	714-1018	181	182	ROHNER, H.T.K.	559-933	183	184	MULLETT, S.A.	714-1018	185	186	ROHNER, H.T.K.	559-933	187	188	MULLETT, S.A.	714-1018	189	190	ROHNER, H.T.K.	559-933	191	192	MULLETT, S.A.	714-1018	193	194	ROHNER, H.T.K.	559-933	195	196	MULLETT, S.A.	714-1018	197	198	ROHNER, H.T.K.	559-933	199	200	MULLETT, S.A.	714-1018	201	202	ROHNER, H.T.K.	559-933	203	204	MULLETT, S.A.	714-1018	205	206	ROHNER, H.T.K.	559-933	207	208	MULLETT, S.A.	714-1018	209	210	ROHNER, H.T.K.	559-933	211	212	MULLETT, S.A.	714-1018	213	214	ROHNER, H.T.K.	559-933	215	216	MULLETT, S.A.	714-1018	217	218	ROHNER, H.T.K.	559-933	219	220	MULLETT, S.A.	714-1018	221	222	ROHNER, H.T.K.	559-933	223	224	MULLETT, S.A.	714-1018	225	226	ROHNER, H.T.K.	559-933	227	228	MULLETT, S.A.	714-1018	229	230	ROHNER, H.T.K.	559-933	231	232	MULLETT, S.A.	714-1018	233	234	ROHNER, H.T.K.	559-933	235	236	MULLETT, S.A.	714-1018	237	238	ROHNER, H.T.K.	559-933	239	240	MULLETT, S.A.	714-1018	241	242	ROHNER, H.T.K.	559-933	243	244	MULLETT, S.A.	714-1018	245	246	ROHNER, H.T.K.	559-933	247	248	MULLETT, S.A.	714-1018	249	250	ROHNER, H.T.K.	559-933	251	252	MULLETT, S.A.	714-1018	253	254	ROHNER, H.T.K.	559-933	255	256	MULLETT, S.A.	714-1018	257	258	ROHNER, H.T.K.	559-933	259	260	MULLETT, S.A.	714-1018	261	262	ROHNER, H.T.K.	559-933	263	264	MULLETT, S.A.	714-1018	265	266	ROHNER, H.T.K.	559-933	267	268	MULLETT, S.A.	714-1018	269	270	ROHNER, H.T.K.	559-933	271	272	MULLETT, S.A.	714-1018	273	274	ROHNER, H.T.K.	559-933	275	276	MULLETT, S.A.	714-1018	277	278	ROHNER, H.T.K.	559-933	279	280	MULLETT, S.A.	714-1018	281	282	ROHNER, H.T.K.	559-933	283	284	MULLETT, S.A.	714-1018	285	286	ROHNER, H.T.K.	559-933	287	288	MULLETT, S.A.	714-1018	289	290	ROHNER,																																																																																																																																																																																																																																																																																																																																																																																																																																																																																																																																																			

Explanation and Use Sheet for Geauga County, Ohio

SAMPLE (PARTIAL) COUNTY INDEX MAP



- Township Boundary
- Township Name
- Village Boundary
- Village Name
- Tract Lot Number
- Street Name
- Acreage
- Deed Book & Page
- Owners Name
- Denotes Continous Ownership

SAMPLE (PARTIAL) MAP PAGE



- Map Page Number
- Village Name
- Village Boundary
- Township Name

SAMPLE (PARTIAL) MUNICIPALITY INDEX MAP



- Street Name
- Village Name
- Township Name

USE OF THE MAP VOLUME

1. LOCATE THE GENERAL AREA OF INTEREST ON THE COUNTY INDEX MAP, ATLAS PAGE 'B', AND NOTE THE MUNICIPALITY NAME (TOWNSHIP OR VILLAGE).
2. REFER TO THE TABLE OF CONTENTS, ATLAS PAGE 'C', AND NOTE THE BEGINNING ATLAS PAGE NUMBER FOR THE MUNICIPALITY OF INTEREST.
3. TURN TO THE PAGE INDICATED. ON THIS PAGE WILL APPEAR AN INDEX MAP FOR THAT MUNICIPALITY.
4. LOCATE THE GENERAL AREA OF INTEREST AND NOTE THE MAP PAGE NUMBER. THIS MAY BE EITHER A LETTER OR A NUMBER.
5. MAP PAGES ARE IN ALPHABETICAL (OR NUMERICAL) SEQUENCE FOLLOWING THE MUNICIPALITY INDEX MAP. FOLLOW SEQUENCE TO THE MAP PAGE INDICATED.
6. LOCATE SPECIFIC PARCEL OF INTEREST AND NOTE THE DESIRED INFORMATION.

NOTE: ON SOME MAPS YOU MAY BE REFERRED TO A DETAIL SHEET SHOWING AN ENLARGEMENT OF THE AREA. THESE MAPS ARE FOUND AT THE END OF THE REGULAR MAP PAGES IN EACH MUNICIPALITY IN EITHER ALPHABETICAL OR NUMERICAL SEQUENCE.

NOTE: CHARDON VILLAGE HAS TITLE SHEETS. TO LOCATE OWNERS NAME, NOTE THE PARCEL NUMBER, REFER TO THE TITLE PAGE FOLLOWING THE MAP OF INTEREST, FOLLOW NUMERICAL SEQUENCE TO THE PARCEL NUMBER OF INTEREST AND NOTE THE DESIRED INFORMATION. IN ALL OTHER MUNICIPALITIES THE OWNERS NAME APPEARS ON THE MAP PAGE.

This book is the property of REAL ESTATE DATA, INC. and is distributed by REDI under a leasing arrangement requiring return to REDI upon termination of the lease. REDI reserves the right to reclaim this book if found in the possession of any firm or person where possession was obtained through any unauthorized source.